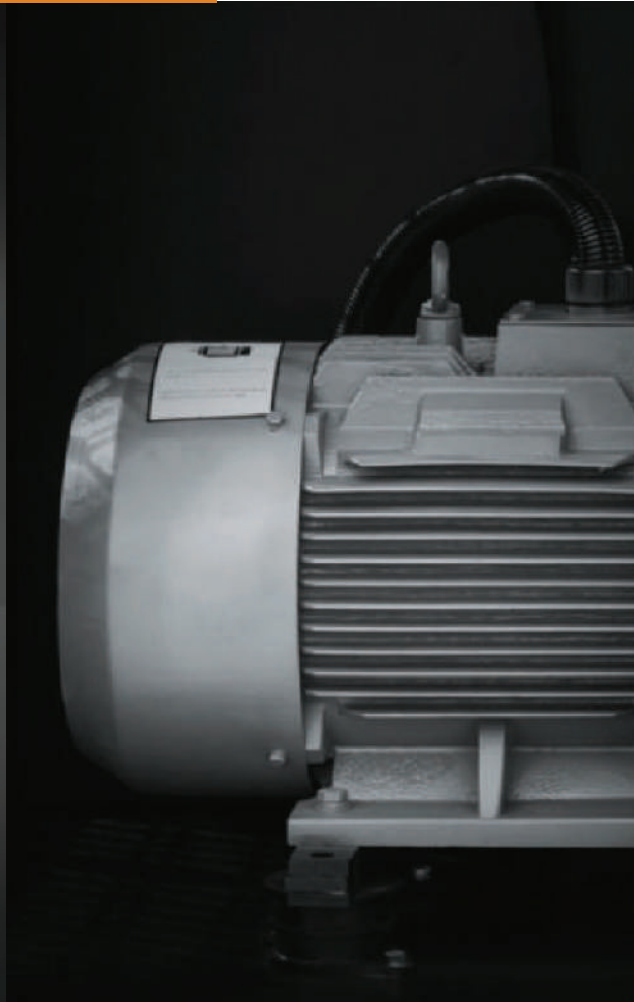




GENEXIS
KOMPRESSOREN



GENEXIS SCREW AIR COMPRESSOR

Catalogue

Germany Genexis Compressor





GENEXIS

KOMPRESSOREN

*Choose
Genexis
Kompressoren*

*Choose
Quality*



INTRODUCTION

GENEXIS KOMPRESSOREN FIXED SPEED COMPRESSOR

Energy saving and environmental protection are new technological challenges for today's industrial product and have become the largest mission of air compressor industry in the 21st century. In order to meet the needs of the times, leading its peers, Germany Genexis Kompressoren Compressor take meeting customers demand as the core of technology development, constantly developing advanced leading screw compressors suitable for the trend of the times. Genexis Kompressoren EGM series screw air compressors are **exporting to more than 100 countries and area**, with advantage of reliable operation, low noise, long life, high efficiency and more energy-saving.

Why Genexis Kompressoren?



4 ADVANTAGES:

MORE
EFFICIENT 01

MORE
COMFORTABLE 02

MORE
STABLE 03

MORE
CONVENIENT 04

REASON TO CHOOSE US!



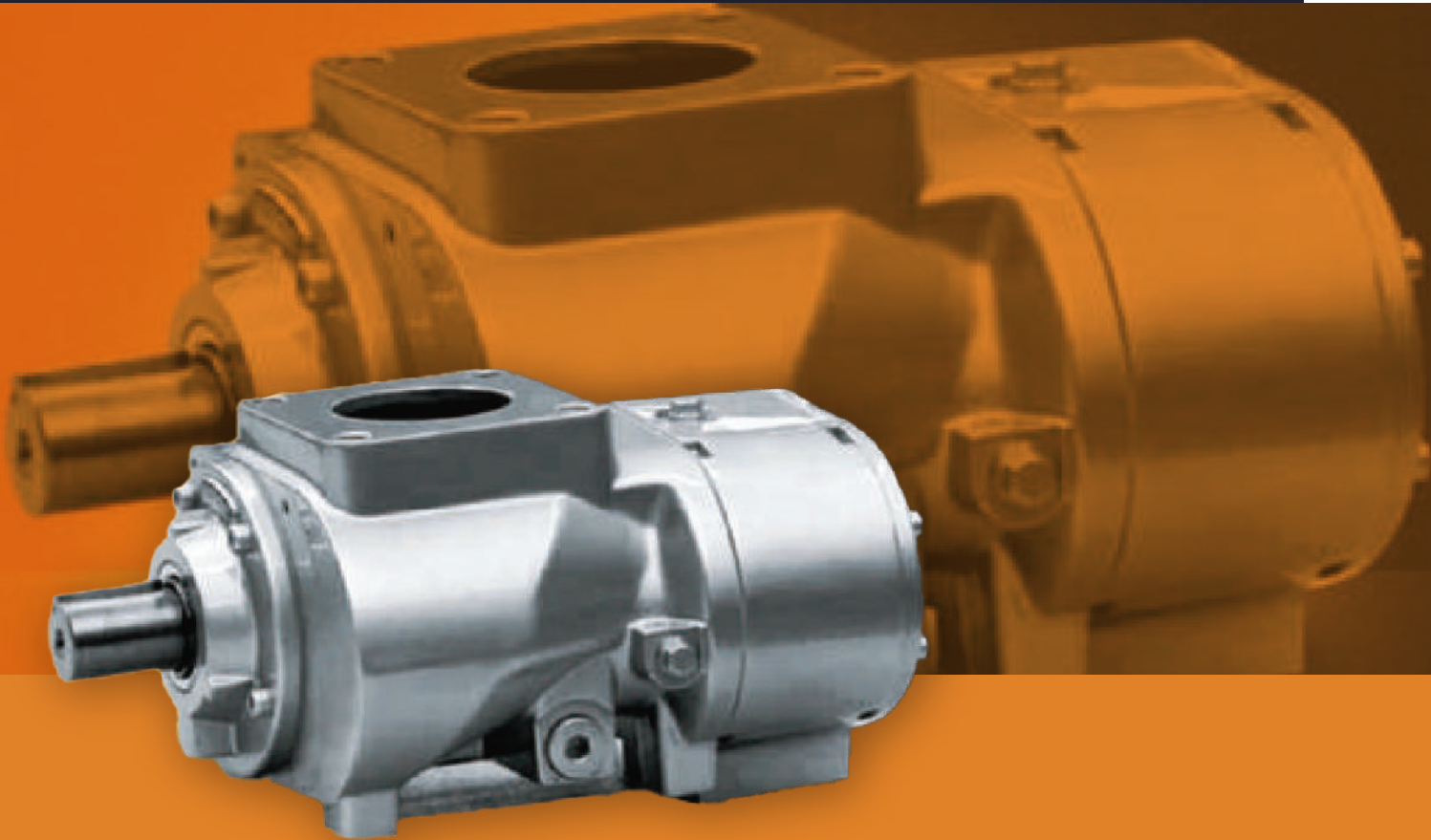
Full touch
screen



IE4
motor

OUR PRODUCTS

Genexis Screw Air Compressor



Lower Noise



*Variable Frequency
Regulation Stable
Supply Pressure*



*German Schaeffler Bearing
Swedish SKF Bearing*



*German
Technology*



*Microcomputer Control
Simple & Convenient
Operation*



01

More Efficient

- Technology Innovation
- Long Life
- Low Noise
- High Efficiency Air End
- More Efficient
- Low Vibration

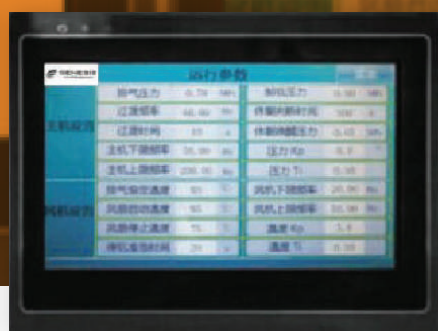
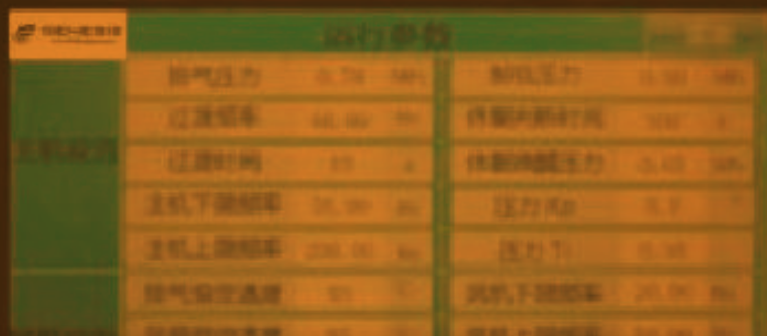
02

More Comfortable

- **Energy Efficiency:**
Frequency conversion technology supplies energy based on gas demand, minimizing energy loss. The motor operates at a lower frequency, reducing mechanical rotation noise.
- **Reduced Noise:**
Frequency conversion adjusts the motor speed without the need for frequent loading and unloading, reducing noise caused by these operations.
- **Stable Pressure:**
Continuous loading maintains stable pressure, reducing noise associated with unstable pressure fluctuations.



GENEXIS
KOMPRESSOREN



03

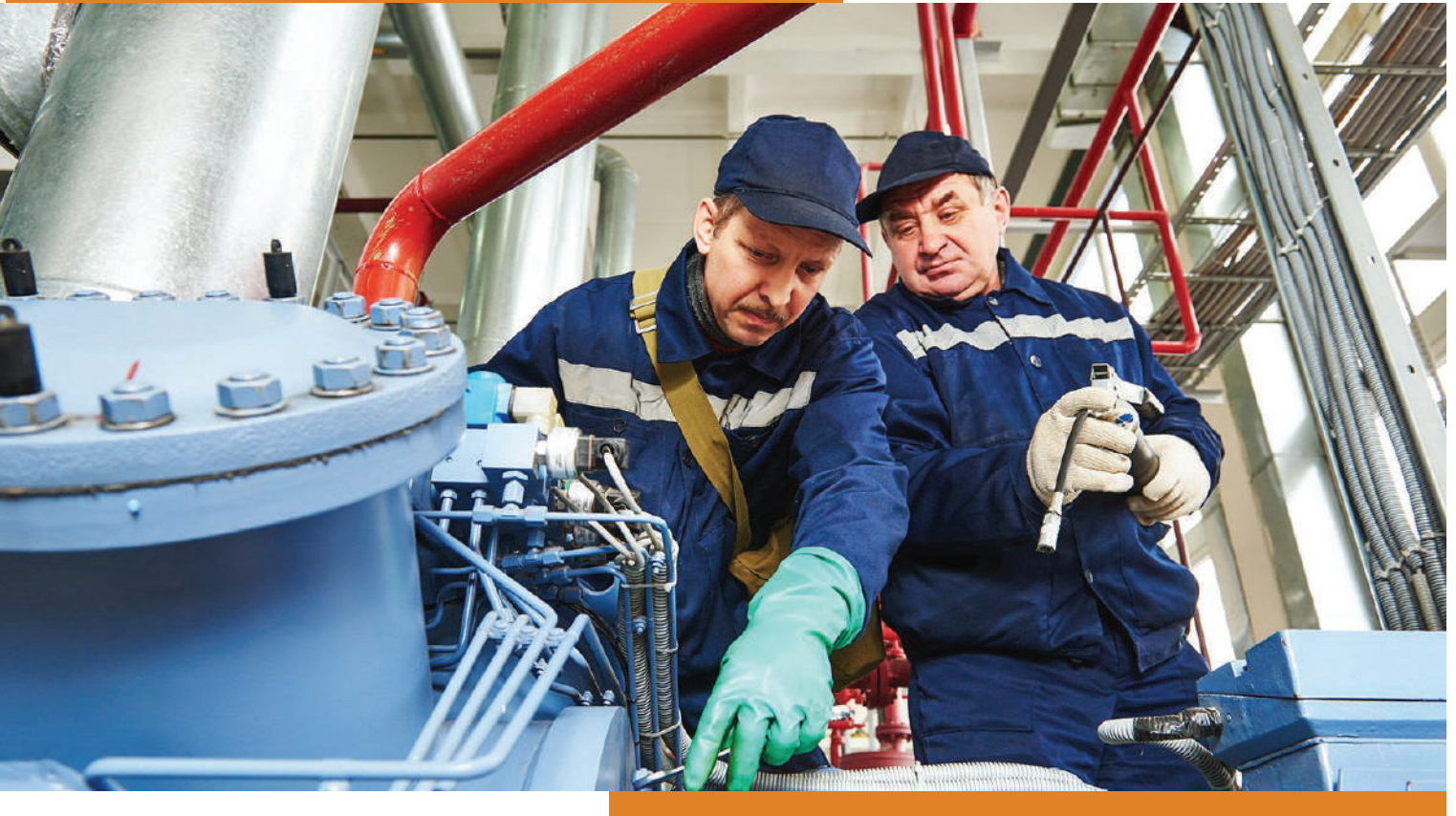
More Convenient *(Touch Screen)*

- One-touch switch for changing control pressure settings**
The power saving control pressure can be easily changed on the operation panel.
- The newly developed operating panel is simple and easy to understand**
Energy saving mode and remote operation conversion can be realized directly on the operation panel. Moreover, in the event of a failure, the display will show the contents of the fault and the fault can be quickly eliminated.
- Genexis Kompressoren unique in-line vector control*1. And PID control achieve fast response while ensuring safety and reliability**
The variable speed control of the EPM Series and the system control of the compressor are all technologies developed by Genexis Kompressoren. Exhaust pressure ± 0.01 MPa control system, while achieving a high degree of response, but also to play a superior load following up and safety.
- The status of the compressor and various settings can be confirmed on the LED display**
- You can use the functions of timing operation, alternate operation, etc. to save energy and save labor**



MAINTENANCE OF AIR COMPRESSOR

We provide selective maintenance services for customer's equipment maintenance. The content is customized for your equipment.



You can choose a **single price maintenance** or choose **long-term parts supply** or preventive maintenance contract, through the above contract, you can enjoy valued service and guarantee and overhauled and updated parts at competitive price.

We also provide energy saving solution, such as energy recovery, frequency conversion, and energy-saving optimization systems, can greatly reduce your production cost.



Only use genuine parts and service of **GENEXIS KOMPRESSOREN COMPRESSOR DEALERSHIP** to ensure the normal operation of the compressor group and normal life to the greatest extent.

TECHNICAL PARAMETER OF AGD SCREW AIR COMPRESSOR

Model	Motor Power (Kw)	Exhaust Pressure (Mpa)	Exhaust Volume (m3/min)	Outlet Size (size)	Size L x W x H (mm)	Weight (Kg)																																																																																																																																													
AGD-10A	7.5	0.8	1.1	G1/2"	800 x 650 x 840	182																																																																																																																																													
		1.0	0.9				AGD-20A	15	0.8	2.3	G3/4"	940 x 720 x 1020	277	1.0	2.0	AGD-30A	22	0.8	3.8	G1"	1200 x 950 x 1135	410	1.0	3.6	AGD-40A	30	0.8	5.2	G1"	1200 x 950 x 1135	460	1.0	4.8	AGD-50A	37	0.8	6.5	G1 1/2"	1420 x 900 x 1390	610	1.0	5.7	AGD-60A	45	0.8	7.5	G1 1/2"	1560 x 1000 x 1365	830	1.0	6.8	1.2	5.6	AGD-75A	55	0.8	10.5	G2"	1800 x 1070 x 1490	1120	1.0	8.9	1.2	7.6	AGD-100A	75	0.8	13.5	G2"	1800 x 1070 x 1490	1290	1.0	11.5	1.2	10.0	AGD-120A	90	0.8	16.5	G2"	2100 x 1400 x 1780	1900	1.0	13.7	1.2	12.3	AGD-150A	110	0.8	20.5	G2 1/2"	2500 x 1450 x 1800	2300	1.0	17.9	1.2	15.3	AGD-175A	132	0.8	24.0	G2 1/2"	2700 x 1550 x 1800	3500	1.0	21.3	1.2	18.3	AGD-220A	160	0.8	28.5	G2 1/2"	2700 x 1550 x 1800	3800	1.0	25.5	1.2	21.5	AGD-250A	185	0.8	32.0	DN80	2800 x 1800 x 1950	3450	1.0	27.5	1.2	25.1	AGD-300A	220	0.8	37.5	DN80	2800 x 1800 x 1950	3850	1.0	31.5	1.2	28.2	AGD-350A	250	0.8	42.2	DN80	3250 x 2100 x 2300
AGD-20A	15	0.8	2.3	G3/4"	940 x 720 x 1020	277																																																																																																																																													
		1.0	2.0				AGD-30A	22	0.8	3.8	G1"	1200 x 950 x 1135	410	1.0	3.6	AGD-40A	30	0.8	5.2	G1"	1200 x 950 x 1135	460	1.0	4.8	AGD-50A	37	0.8	6.5	G1 1/2"	1420 x 900 x 1390	610	1.0	5.7	AGD-60A	45	0.8	7.5	G1 1/2"	1560 x 1000 x 1365	830	1.0	6.8			1.2	5.6				AGD-75A	55	0.8	10.5			G2"	1800 x 1070 x 1490				1120	1.0	8.9	1.2			7.6	AGD-100A				75	0.8	13.5	G2"			1800 x 1070 x 1490	1290				1.0	11.5	1.2	10.0			AGD-120A	90				0.8	16.5	G2"	2100 x 1400 x 1780			1900	1.0				13.7	1.2	12.3	AGD-150A			110	0.8				20.5	G2 1/2"	2500 x 1450 x 1800	2300			1.0	17.9				1.2	15.3	AGD-175A	132			0.8	24.0				G2 1/2"	2700 x 1550 x 1800	3500	1.0			21.3	1.2		
AGD-30A	22	0.8	3.8	G1"	1200 x 950 x 1135	410																																																																																																																																													
		1.0	3.6				AGD-40A	30	0.8	5.2	G1"	1200 x 950 x 1135	460	1.0	4.8	AGD-50A	37	0.8	6.5	G1 1/2"	1420 x 900 x 1390	610	1.0	5.7	AGD-60A	45	0.8	7.5	G1 1/2"	1560 x 1000 x 1365	830	1.0	6.8			1.2	5.6				AGD-75A	55	0.8	10.5	G2"	1800 x 1070 x 1490	1120	1.0	8.9			1.2	7.6	AGD-100A	75			0.8	13.5	G2"		1800 x 1070 x 1490	1290	1.0	11.5	1.2	10.0		AGD-120A	90	0.8		16.5	G2"		2100 x 1400 x 1780	1900			1.0	13.7	1.2	12.3	AGD-150A	110	0.8	20.5	G2 1/2"			2500 x 1450 x 1800	2300	1.0	17.9	1.2			15.3	AGD-175A		132	0.8	24.0	G2 1/2"	2700 x 1550 x 1800	3500	1.0		21.3	1.2		18.3	AGD-220A	160	0.8	28.5				G2 1/2"	2700 x 1550 x 1800	3800	1.0	25.5	1.2	21.5	AGD-250A	185			0.8	32.0	DN80	2800 x 1800 x 1950	3450	1.0	27.5				1.2	25.1	AGD-300A	220	0.8	37.5	DN80
AGD-40A	30	0.8	5.2	G1"	1200 x 950 x 1135	460																																																																																																																																													
		1.0	4.8				AGD-50A	37	0.8	6.5	G1 1/2"	1420 x 900 x 1390	610	1.0	5.7	AGD-60A	45	0.8	7.5	G1 1/2"	1560 x 1000 x 1365	830	1.0	6.8			1.2	5.6				AGD-75A	55	0.8	10.5	G2"	1800 x 1070 x 1490	1120	1.0	8.9			1.2	7.6				AGD-100A	75	0.8	13.5	G2"	1800 x 1070 x 1490			1290	1.0	11.5	1.2		10.0			AGD-120A	90	0.8	16.5	G2"			2100 x 1400 x 1780	1900	1.0		13.7			1.2	12.3	AGD-150A	110	0.8	20.5			G2 1/2"	2500 x 1450 x 1800		2300	1.0			17.9	1.2	15.3	AGD-175A	132	0.8		24.0		G2 1/2"	2700 x 1550 x 1800				3500	1.0	21.3	1.2	18.3	AGD-220A			160	0.8	28.5	G2 1/2"	2700 x 1550 x 1800				3800	1.0	25.5	1.2			21.5	AGD-250A	185	0.8				32.0	DN80	2800 x 1800 x 1950	3450	1.0	27.5	1.2			25.1	AGD-300A	
AGD-50A	37	0.8	6.5	G1 1/2"	1420 x 900 x 1390	610																																																																																																																																													
		1.0	5.7				AGD-60A	45	0.8	7.5	G1 1/2"	1560 x 1000 x 1365	830	1.0	6.8			1.2	5.6				AGD-75A	55	0.8	10.5	G2"	1800 x 1070 x 1490	1120	1.0	8.9			1.2	7.6				AGD-100A	75	0.8	13.5	G2"	1800 x 1070 x 1490	1290	1.0	11.5			1.2	10.0			AGD-120A	90		0.8	16.5	G2"	2100 x 1400 x 1780	1900	1.0	13.7			1.2	12.3		AGD-150A	110			0.8	20.5	G2 1/2"	2500 x 1450 x 1800	2300	1.0	17.9			1.2	15.3	AGD-175A	132			0.8		24.0	G2 1/2"	2700 x 1550 x 1800	3500	1.0	21.3			1.2	18.3	AGD-220A	160			0.8	28.5	G2 1/2"		2700 x 1550 x 1800	3800	1.0	25.5		1.2	21.5		AGD-250A	185			0.8	32.0	DN80		2800 x 1800 x 1950	3450	1.0	27.5	1.2	25.1			AGD-300A	220	0.8	37.5	DN80				2800 x 1800 x 1950	3850	1.0	31.5	1.2	28.2		AGD-350A
AGD-60A	45	0.8	7.5	G1 1/2"	1560 x 1000 x 1365	830																																																																																																																																													
		1.0	6.8																																																																																																																																																
		1.2	5.6																																																																																																																																																
AGD-75A	55	0.8	10.5	G2"	1800 x 1070 x 1490	1120																																																																																																																																													
		1.0	8.9																																																																																																																																																
		1.2	7.6																																																																																																																																																
AGD-100A	75	0.8	13.5	G2"	1800 x 1070 x 1490	1290																																																																																																																																													
		1.0	11.5																																																																																																																																																
		1.2	10.0																																																																																																																																																
AGD-120A	90	0.8	16.5	G2"	2100 x 1400 x 1780	1900																																																																																																																																													
		1.0	13.7																																																																																																																																																
		1.2	12.3																																																																																																																																																
AGD-150A	110	0.8	20.5	G2 1/2"	2500 x 1450 x 1800	2300																																																																																																																																													
		1.0	17.9																																																																																																																																																
		1.2	15.3																																																																																																																																																
AGD-175A	132	0.8	24.0	G2 1/2"	2700 x 1550 x 1800	3500																																																																																																																																													
		1.0	21.3																																																																																																																																																
		1.2	18.3																																																																																																																																																
AGD-220A	160	0.8	28.5	G2 1/2"	2700 x 1550 x 1800	3800																																																																																																																																													
		1.0	25.5																																																																																																																																																
		1.2	21.5																																																																																																																																																
AGD-250A	185	0.8	32.0	DN80	2800 x 1800 x 1950	3450																																																																																																																																													
		1.0	27.5																																																																																																																																																
		1.2	25.1																																																																																																																																																
AGD-300A	220	0.8	37.5	DN80	2800 x 1800 x 1950	3850																																																																																																																																													
		1.0	31.5																																																																																																																																																
		1.2	28.2																																																																																																																																																
AGD-350A	250	0.8	42.2	DN80	3250 x 2100 x 2300	4250																																																																																																																																													
		1.0	38.5																																																																																																																																																
		1.2	34.9																																																																																																																																																